



STARS CO., LTD.

Datasheet

ACIM250

Publication: **ACIM250**

Edition: **Jan 10, 2021**



Description:

ACIM-Series motor controllers are special designed for AC induction motor (called ACIM motor). ACIM-series motor controllers are designed to control AC induction motor in battery power traction and pump applications. The ACIM-series motor controller operate voltage from 24 to 72VDC and output current from 250 to 200Amps, the controller is suitable for rating 0.6 – 3 kW AC induction motors.

Applications:

The controller designed in programmable system it means the controller parameters can be programmed by different applications. The applications include high power motorcycle, scooter, pallet truck, scissor lift, stackers, sweeper/ scrubber machines, industrial vehicles, person carrier, electric tricycle, golf car, electric boats and light electric car.

General Features include:

- Suitable for AC induction motor
- Low noise, high efficient and newest driving technology
- Programmable motor controller by HP88 handheld programmer
- FOC and Sine wave motor controller
- Simple size and high weight/power density
- Three half bridge design which provide smooth and silent operation
- Four quadrant EV motor control technology
- Regenerative braking allows shorter stopping distances, increases battery charge and driving range, and reduces motor heating
- Anti-roll-back/Anti-roll-forward function
- Real time current control
- Motor stall protection
- Molex Mini-Fit series connector for small signal
- CANopen function
- High pedal disable function (HPD)
- Real time status LED
- Work with STARS SmartView EV display
- 2 individual PWM drivers for main contactor and electronic magnetic brake
- EMR/Belly switch available
- Brake throttle available
- Over/Low voltage protection, Motor temperature protect, Over/Under temperature protection

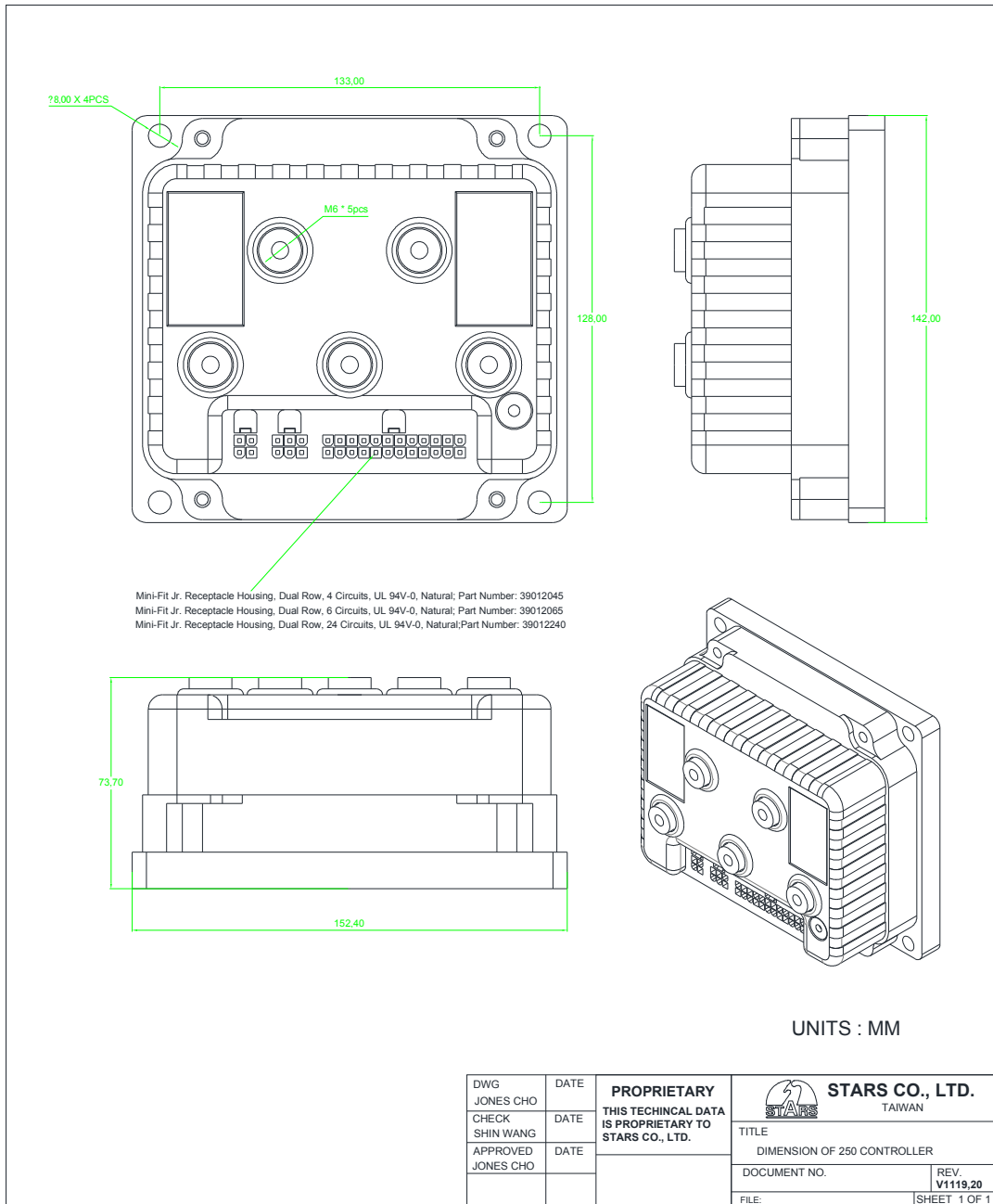
Models :

Model	ACIM250-2425	ACIM250-4825	ACIM250-7220	ACIM250-9615
Voltage	24	48	72	96
Min Voltage (VDC)	32	30	60	70
Max Voltage (VDC)	15	60	85	120
Max. Current (A)	250	250	200	150

Technical Data:

Dimension(mm)	152.4 X 142 X 73.7 mm
Weight(kg)	1.3
Efficiency	98%
Connector	Molex Mini-Fit series connector
Algorithm	FOC and Sine wave
Communication	CAN open
Contactora coil	Line contactora coil control by controller
EM brake coil	Motor EM brake control by controller
PWM driver	4, 2 for Contactora and EMB
Encoder	Hall speed sensor
IP rating	IP53 (IP65 option)
Function	Programmable controller
Drive throttle type	0-5k, 0-5V , CANbus of throttle support
Brake throttle type	0-5k, 0-5V , CANbus of throttle support
Install position	Clean and dry
Cooling	Air Cooling
Isolation	Electrical isolation to heatsink: 500 V ac (minimum)
Storage Temp.	-40 to 80 °C
Operation Temp.	-20 to 80 °C
Motor Temp.	-20 to 120 °C
Motor Temp. Sen.	TY-84/PT1000

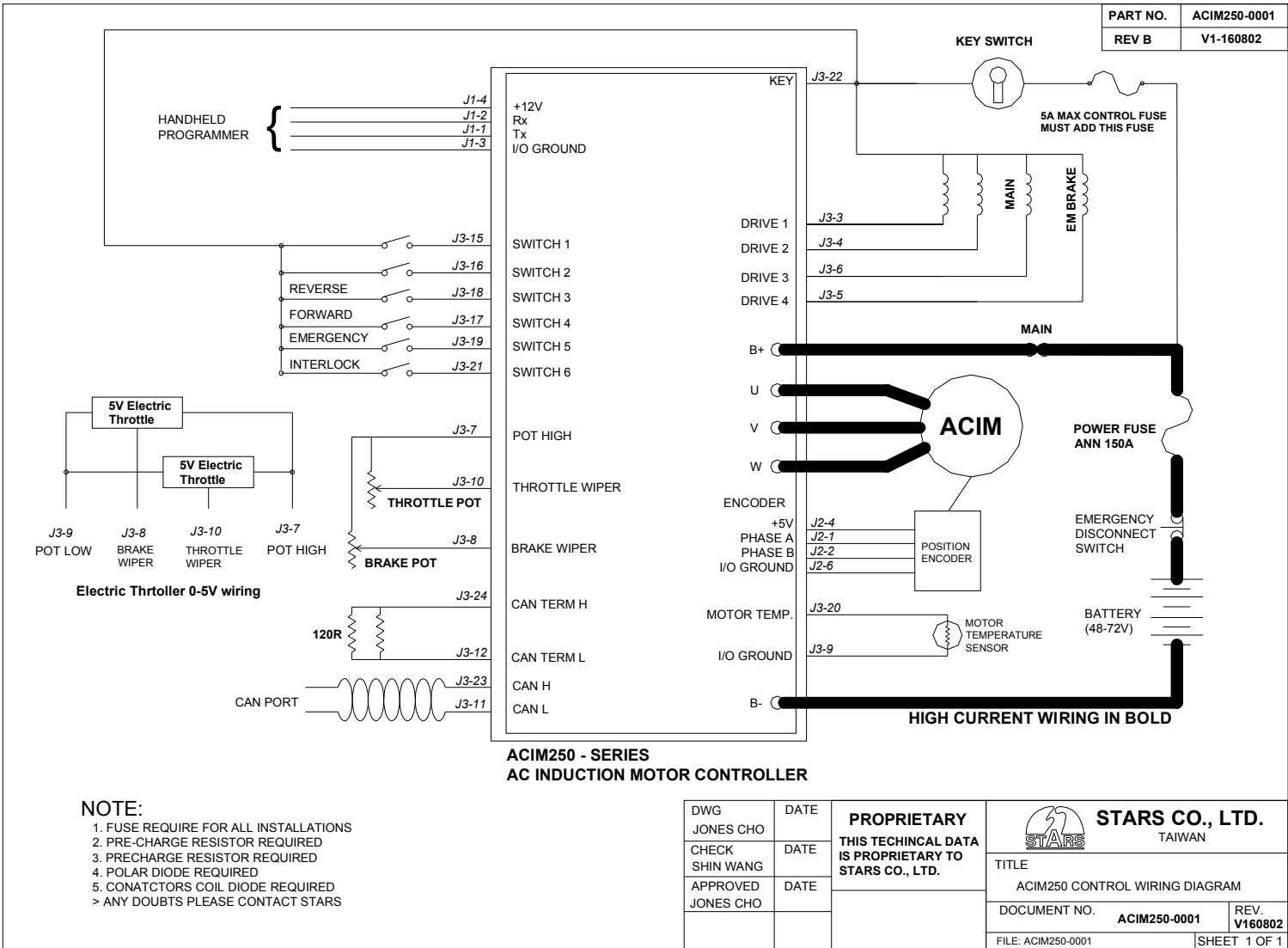
Dimensions:





ACIM250

Typical wiring:



STARS CO., LTD. | info@starstw.com | TEL: 886-3-3131033
 No 16-13, Ln 200, ShangZhu Rd. LuZhu Township, Taoyuan, TAIWAN
www.starstw.com